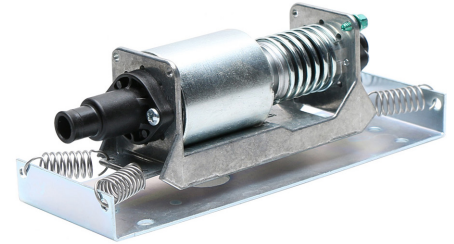
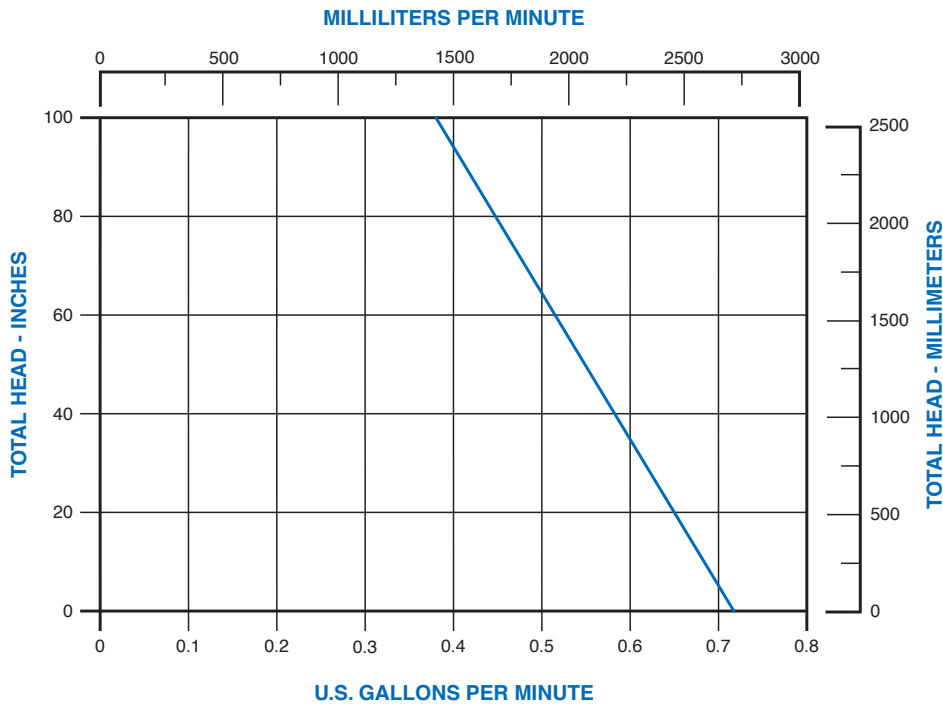


17000-004 H Oscillating Performance Curve



Testing performed in a controlled laboratory environment. Actual performance may vary.

General Specifications	
Max Fluid Temp	104°F (40°C)
Approximate Weight	1.0 lbs (454 grams)
Electrical Rating	230 VOLTS, 50/60 Hz, .21 AMPS, 26 watts
Suction Lift - inches	24
Discharge Pressure - inches	20
Approximate Flow (mL/Min)	1430 - 2725
Required Tubing	7/16" or 12mm I.D.
<ul style="list-style-type: none"> • Diode included on brown wire. • Lead length: Brown & Light Blue wires 39.00"±.38 	

Wetted Materials	
Connector - .44" (12mm)	PP
Valve Assembly	EPT
Impeller Assembly	EPT
RoHS/REACH	
Many GRI pumps are RoHS & REACH compliant. For declarations by specific model numbers, please contact GRI.	

17000-004 H Oscillating Drawing & Dimensions

